

**INFLATION UP  
INDUSTRIALS DOWN**

**PART D**

Background: Chicago skyline from Planetarium promontory.

A photograph of the Chicago skyline reflected in a body of water. The skyline is dark and silhouetted against a lighter sky, with the reflection appearing in the water below. The water in the foreground is slightly rippled.

**Chicago has had four lives:**

**(1)**

**frontier post where Indian fur trappers interfaced  
with New England, Canadian  
and European traders.**

A photograph of the Chicago skyline reflected in a body of water. The skyline is dark and silhouetted against a lighter background, with the reflection appearing as a lighter, inverted image below the horizon line. The water in the foreground is dark and has some ripples.

**Chicago has had four lives:**

**(2)**

**trans-shipper for the manufactured goods  
of European empires and the agricultural  
and raw products of the American interior  
north of the Ohio River.**





**Chicago has had four lives:**

**(3)**

**industrial center.**



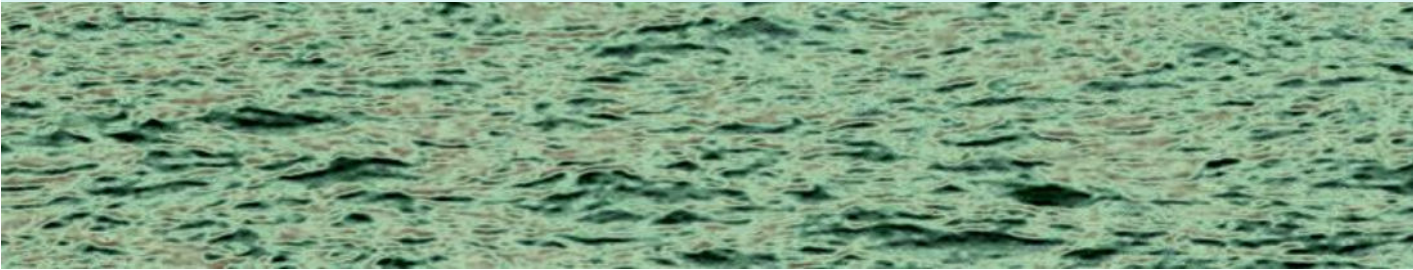




**Chicago has had four lives:**

**(4)**

**high-maintenance, debt-ridden  
post-industrial wasteland.**





2005-02-23. Torrence Avenue 11236S. Acme Steel. Abandoned.





2005-02-05. Wacker Drive. View southeast across Chicago River from 400W 400N. . Big cities pull in big lump-sum tax revenues for the profit of public financier (persons who buy and get rich from municipal debt).





2004-08-25. 43rd Street 2200W. Photographer stands with back to Bricklayers (Masons) Union school and faces west. Chicago's principle marketable asset is now its land. Titles to land leave the city by the trainload to pay debts..



Underpass. Cermak 3400W, Chicago, Illinois.





Underpass. Cermak 3400W, Chicago, Illinois.





2006-12-09. Southbound on main street. Chicagoans consume goods but don't produce goods for exchange. Interest payment son debts for housing, goods, and municipal services, leave the city by the trainload.



2008-04-11 Chicago Fire Brick Company. Ashland 7531S, Chicago, Illinois.





2008-04-11 Chicago Fire Brick Company. Ashland 7531S, Chicago, Illinois.





2008-04-11 Chicago Fire Brick Company. Ashland 7531S, Chicago, Illinois.





2008-04-11 Chicago Fire Brick Company. Ashland 7531S, Chicago, Illinois.





2008-04-11 Chicago Fire Brick Company. Ashland 7531S, Chicago, Illinois.





2008-04-11 Chicago Fire Brick Company. Ashland 7531S, Chicago, Illinois.



2008-04-11 Chicago Fire Brick Company. Ashland 7531S, Chicago, Illinois.





Small factory rehab financed by city loan. Cicero 2600N, Chicago, Illinois.





6500W, 2102N, Chicago, Illinois. Illinois Gear.





6500W, 2102N, Chicago, Illinois. Illinois Gear.





6500W, 2102N, Chicago, Illinois. Illinois Gear.





Shoppers Paradise (demolished). Western 4500S. Chicago, Illinois.





Washington 2620W, Chicago, Illinois.





Ogden 4115S, Chicago, Illinois.





Archer Avenue bus.



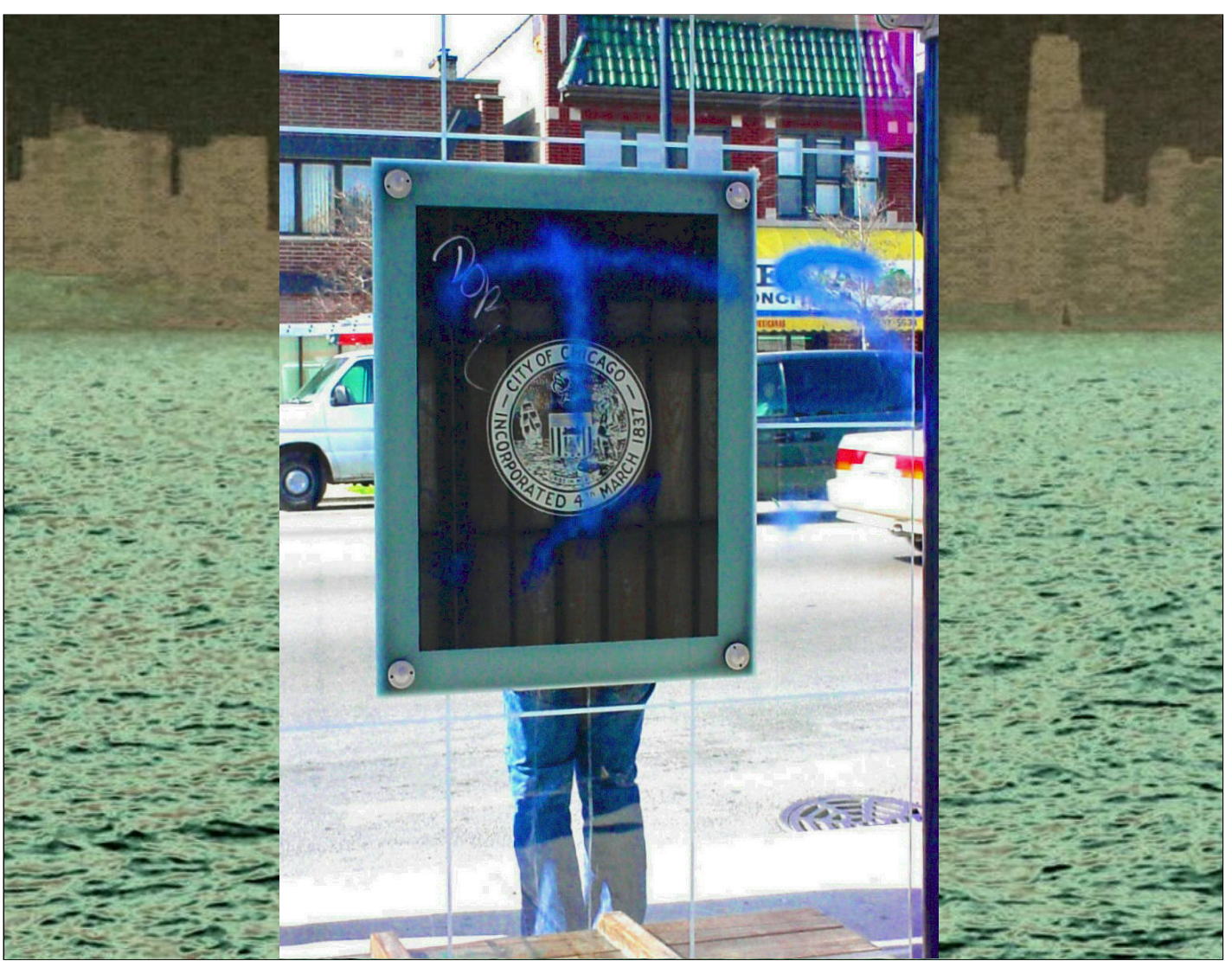


Archer Avenue bus.



Bus shelter. Fullerton 4900W, Chicago, Illinois.





Bus shelter. Fullerton 4900W, Chicago, Illinois.



2008. Example of foreclosure and tax delinquent devastation, mid to far south side, Chicago, Illinois. We used to blame slumlords for the problem, without understanding that public financiers and mortgage lenders are the slumlords.





2008. Example of foreclosure and tax delinquent devastation, mid to far south side, Chicago, Illinois.





2005-02-23. Emerald 8200S, Chicago, Illinois.





2005-02-23. Emerald 8135 S, Chicago, Illinois.



2005-02-23 103rd Street 1004E.





2008. Example of foreclosure and tax delinquent devastation, mid to far south side, Chicago, Illinois.





2008. Example of foreclosure and tax delinquent devastation, mid to far south side, Chicago, Illinois.





2008. Example of foreclosure and tax delinquent devastation, mid to far south side, Chicago, Illinois.





One of the empty lots on three corners. Justine 6600S, Chicago, Illinois.





2008. Example of foreclosure and tax delinquent devastation, mid to far south side, Chicago, Illinois.





2008. Example of foreclosure and tax delinquent devastation, mid to far south side, Chicago, Illinois.



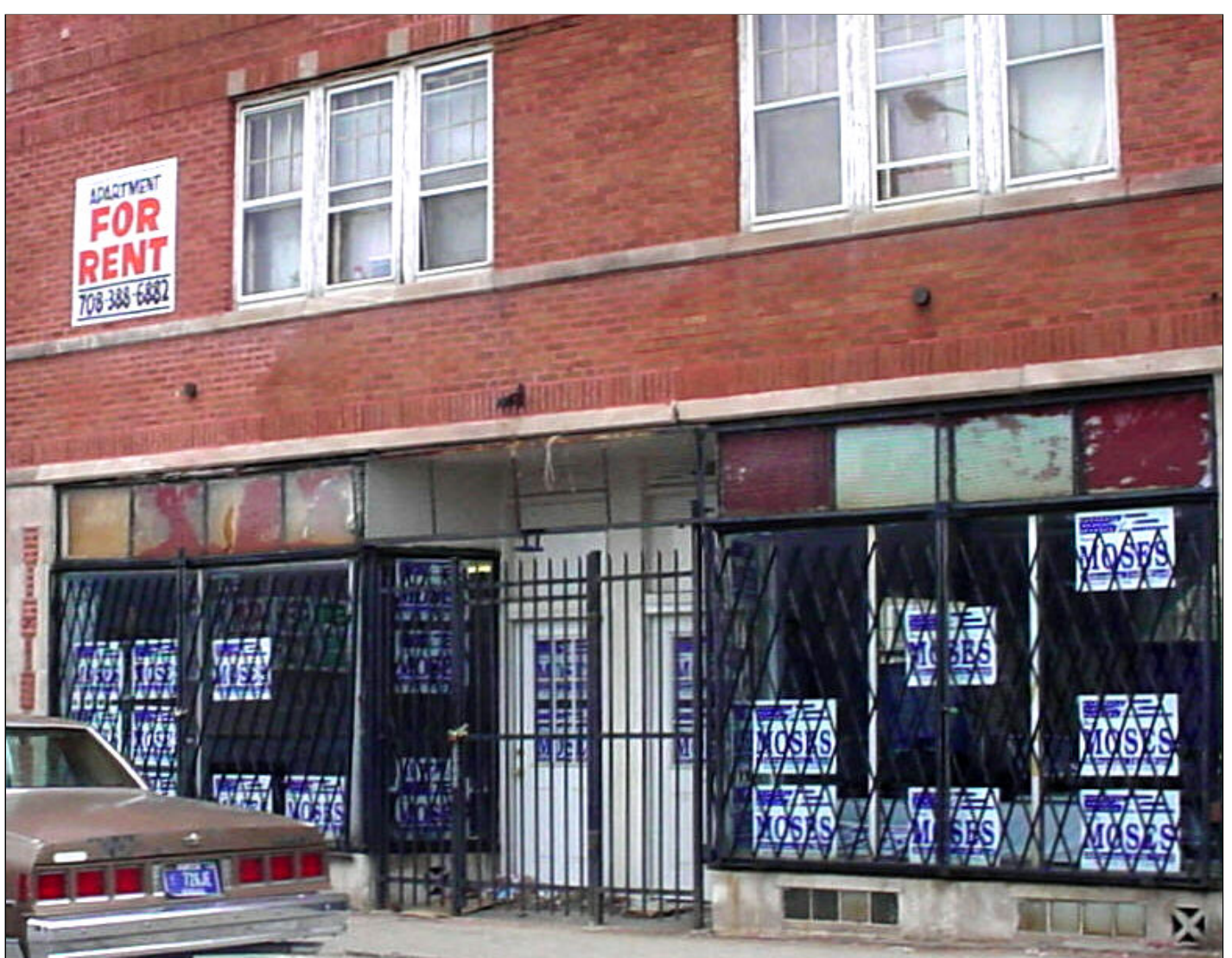


2008. Example of foreclosure and tax delinquent devastation, mid to far south side, Chicago, Illinois.



2008. Example of foreclosure and tax delinquent devastation, mid to far south side, Chicago, Illinois.





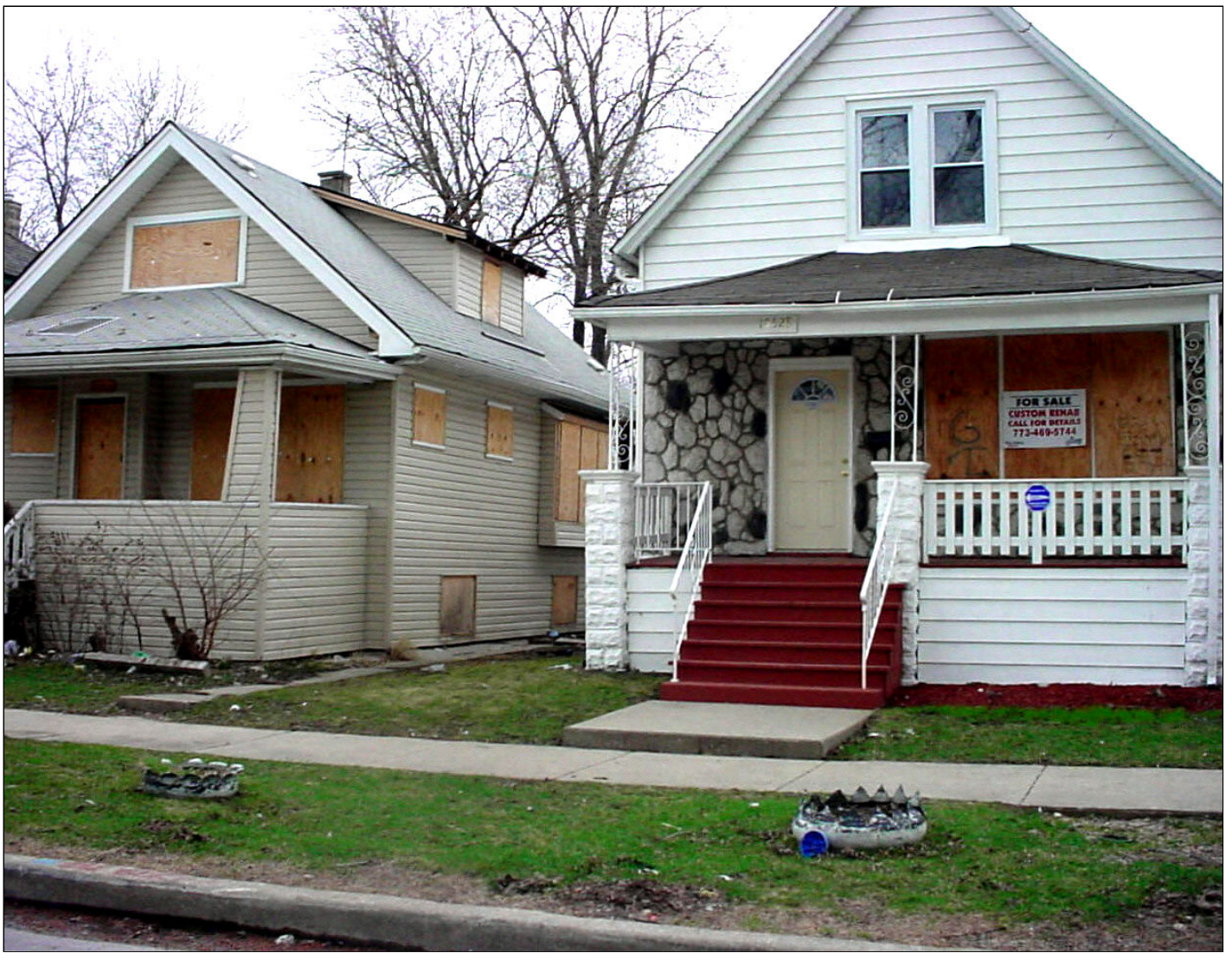
2008. Example of foreclosure and tax delinquent devastation, mid to far south side, Chicago, Illinois.





2008. Example of foreclosure and tax delinquent devastation, mid to far south side, Chicago, Illinois.





2008. Example of foreclosure and tax delinquent devastation, mid to far south side, Chicago, Illinois.





2008. Example of foreclosure and tax delinquent devastation, mid to far south side, Chicago, Illinois.





2008. Example of foreclosure and tax delinquent devastation, mid to far south side, Chicago, Illinois.



2008. Example of foreclosure and tax delinquent devastation, mid to far south side, Chicago, Illinois.





2008. Example of foreclosure and tax delinquent devastation, mid to far south side, Chicago, Illinois.





2008. Example of foreclosure and tax delinquent devastation, mid to far south side, Chicago, Illinois.





Cermak (2200S), Chicago, Illinois.





Cermak (2200S), Chicago, Illinois.





2004-10-11. Montana 5019W. Immigrant dreams of making a fortune in real estate often turn to nightmares.





Deming 5011W, Chicago, Illinois.



ADDRESS (RANGE): 5011 W. DEMING DATE OF POSTING: 8/12/08 INSPECTOR NO.: EL 00900

CITY OF CHICAGO FAST TRACK DEMOLITION PROGRAM

# NOTICE

BY DETERMINATION OF THE COMMISSIONER OF BUILDINGS, THIS BUILDING IS OPEN, VACANT AND AN IMMEDIATE AND CONTINUING HAZARD TO THE SURROUNDING COMMUNITY.

YOU HAVE THIRTY (30) DAYS FROM THE DATE ON THIS NOTICE TO ABATE THE HAZARDOUS CONDITIONS AT THE PROPERTY. IF THE COMMISSIONER DETERMINES AFTER SAID THIRTY (30) DAYS THAT THE BUILDING HAS NOT BEEN REPAIRED, DEMOLISHED OR ALL ACCESSIBLE WINDOWS, DOORS, AND ANY OTHER OPENINGS BOARDED AND SECURED AND KEPT SECURED, AND IF ALL GARBAGE, DEBRIS AND OTHER HAZARDOUS, NOXIOUS, OR UNHEALTHY MATERIALS ARE NOT REMOVED FROM IN AND AROUND THE BUILDING, A NOTICE OF DETERMINATION WILL BE MAILED TO THE OWNER(S) OF RECORD INFORMING THEM THAT THE CONDITIONS HAVE NOT BEEN ABATED AND THAT THE CITY OF CHICAGO WILL TAKE ACTION TO ELIMINATE THE HAZARD.

## THIS ACTION COULD INCLUDE DEMOLISHING THE BUILDING

YOU ARE FURTHER NOTIFIED THAT SHOULD THE CITY BE REQUIRED TO TAKE THE NECESSARY ACTION TO ELIMINATE THE HAZARDS CAUSED BY THIS BUILDING, THE OWNER(S) OF RECORD AND ANY OTHER PERSON WHO CAUSES THE CITY OR ITS AGENTS TO INCUR COSTS SHALL BE LIABLE FOR ALL SUCH COSTS INCURRED BY THE CITY.

YOU HAVE THE RIGHT TO OBJECT TO THE CITY TAKING THIS ACTION BY FILING LEGAL ACTION IN A COURT OF COMPETENT JURISDICTION, INCLUDING FILING A COMPLAINT IN THE MUNICIPAL DIVISION OF THE CIRCUIT COURT OF COOK COUNTY, CHALLENGING THE CITY'S DETERMINATION THAT THE BUILDING IS VACANT, OPEN AND HAZARDOUS. IF YOU DECIDE TO FILE A LEGAL ACTION, YOU MUST SERVE A COPY OF YOUR COMPLAINT OR OBJECTION WITH: (1) THE CLERK OF THE CITY OF CHICAGO, ROOM 107, CITY HALL, 121 N. LASALLE STREET, CHICAGO, ILLINOIS, (2) MAYOR RICHARD M. DALEY, ROOM 507, CITY HALL, 121 N. LASALLE STREET, CHICAGO, ILLINOIS 60602, (3) THE COMMISSIONER OF BUILDINGS, 120 N. RACINE AVENUE, CHICAGO, ILLINOIS 60607, AND (4) DEPUTY CORPORATION COUNSEL, MUNICIPAL PROSECUTIONS DIVISION, ROOM 700, 30 N. LASALLE STREET, CHICAGO, ILLINOIS 60602. IF YOU HAVE QUESTIONS ABOUT THIS PROCEDURE, CONTACT A LAWYER.

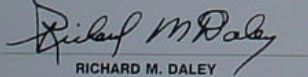
FOR MORE INFORMATION, CONTACT THE FAST TRACK DEMOLITION DIRECTOR AT (312) 743-0409

**THE CITY OF CHICAGO DOES NOT OWN THIS PROPERTY NOR IS IT AVAILABLE FOR SALE THROUGH THE CITY.  
PLEASE DO NOT CALL FOR INFORMATION REGARDING OWNERSHIP, SALE OR PURCHASE OF THIS PROPERTY.**

Illinois Compiled Statutes Chapter 65, Section 5/11-31-1(e) and Chicago Municipal Code Chapters 1-20 and 13-9

**\*\*\*IMPORTANTE\*\*\***

SI USTED NO SABE LEER INGLES, POR FAVOR DE BUSCARA ALGUIEN QUIEN LE PUEDA TRADUCIR ESTE AVISO.

  
RICHARD M. DALEY  
MAYOR



CITY OF CHICAGO  
DEPARTMENT OF BUILDINGS  
OFFICE OF THE COMMISSIONER

Deming 5011W, Chicago, Illinois.





2005-06-10. Chicago Ave 4600W, Chicago, Illinois (at entrance to unindustrial industrial park).





Northbound on Martin Luther King Drive at South Chicago Avenue.