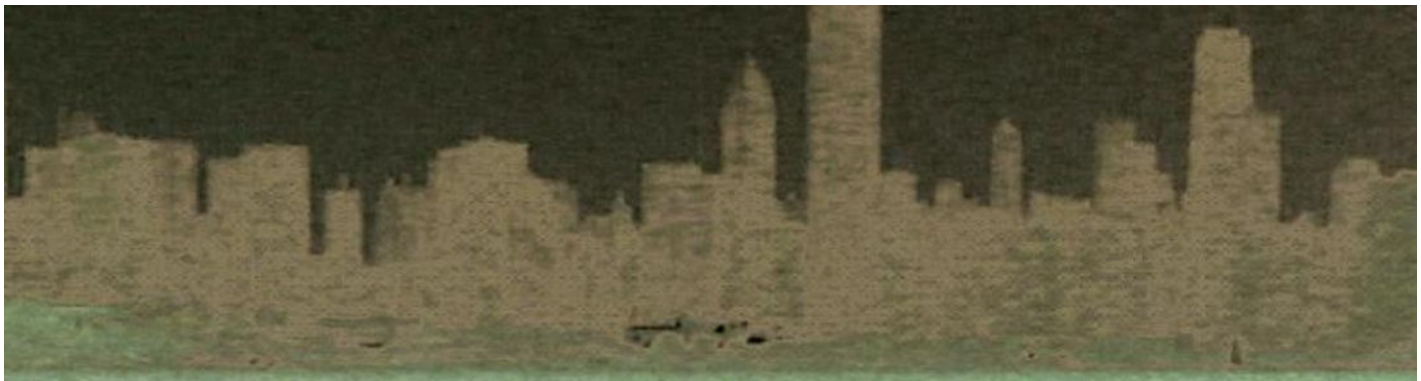


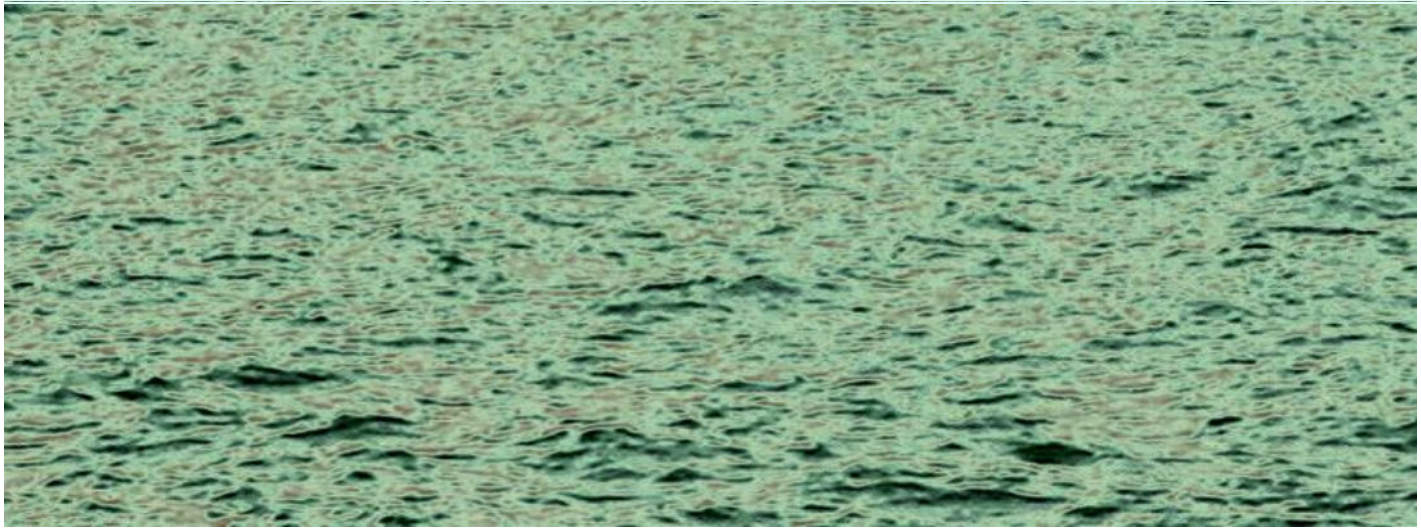
**INFLATION UP
INDUSTRIALS DOWN**

PART B

Background: Chicago skyline from Planetarium promontory.



**The destruction of Chicago industry
has been rapid and almost total.**





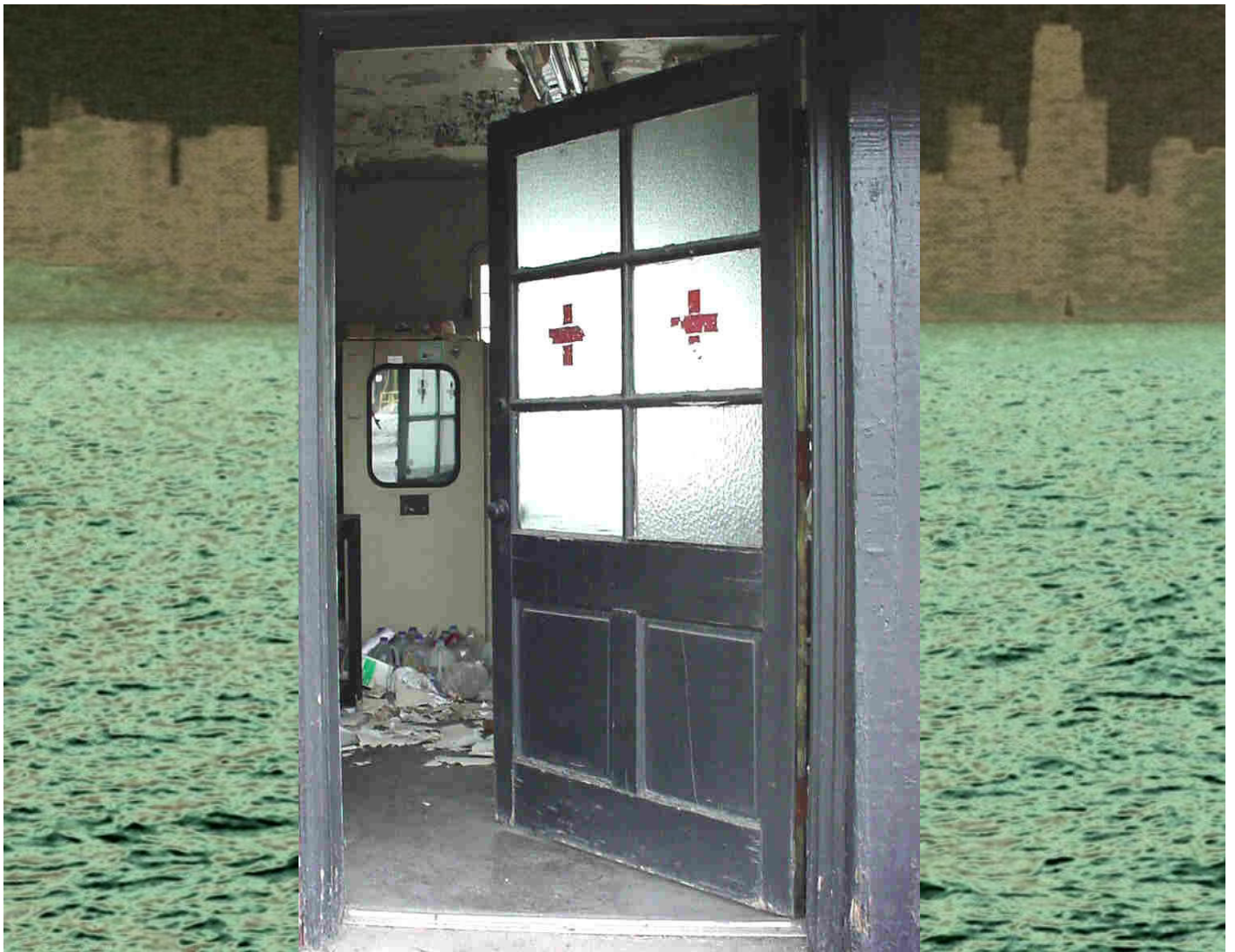
2005-02-25. Cometco (still working). Cortland Street 1509W, Chicago, Illinois



2005-02-23. Acme Steel (abandoned). Torrence Avenue 11236S, Chicago, Illinois.



2005-02-23. Acme Steel (abandoned). Torrence Avenue 11236S, Chicago, Illinois.



2005-02-23. Acme Steel (abandoned). Torrence Avenue 11236S, Chicago, Illinois.



2005-02-23. Acme Steel (abandoned). Torrence Avenue 11236S, Chicago, Illinois.



Damen 5900S, Chicago, Illinois.



Damen 5900S, Chicago, Illinois.



Damen 5700S, Chicago, Illinois.



Damen 5700S, Chicago, Illinois.



Washburne Trade School (Chicago Public Schools facility) (west façade). Kedzie 3100S (looking east on 31st Street), Chicago, Illinois.



2005-02-23. Champlain Avenue 10800S. Industrial conversion to retail. Giant Pullman Car Co. to small strip mall. View south of firehouse in next picture.



2005-02-23. Champlain Avenue 10800S. Pullman Car Company firehouse. Only building left of giant industry that made Chicago famous. Firehouse conversion to Pullman Porters Museum planned.



Pullman plant.



Pullman plant.



Pullman plant.



Pullman.



2005-03-11. 21st Street 2444W. Industrial/ warehouse. Partial use by Ray's Booths.

2008 May update. Looks like Ray's booths may have moved out.



59th Street 1854W, Chicago, Illinois.



59th Street 1854W, Chicago, Illinois.



2005-03-04. Taylor Street 2525W Conversion of industrial to residential planned. Francis Nygren Foundry. Demolition Day. .



2005-03-04. Taylor Street 2525W Conversion of industrial to residential planned. Francis Nygren Foundry. Demolition Day.



2005-03-04. Taylor Street 2525W Conversion of industrial to residential planned. Francis Nygren Foundry. Demolition Day. .



2005-06-07. Schubert 4600W. Aetna Bearing. Abandoned. Demolished 2007.



2005-02-24

North Avenue 4630W. Conversion of industrial to retail. (Giant Helene Curtis complex to Walmart. Demolition Days.



2005-02-24. North Avenue 4630W. Conversion of industrial to retail. (Giant productive Helene Curtis complex to Walmart. Demolition Days.



2004-08-25. Western Avenue 4500-4600S. Demolished.



2004-08-26. Western Avenue 4500-4600S. Industrial conversion to retail. Shoppers Paradise (Shoppers Paradise etc. to Home Depot and empty lots.)



2005-02-04. Western Avenue 4500-4600S. Industrial conversion to retail. Shoppers Paradise (Shoppers Paradise etc. to Home Depot and empty lots.) Demolition days.



2005-02-04. Western Avenue 4500-4600S. Industrial conversion to retail. Shoppers Paradise (Shoppers Paradise etc. to Home Depot and empty lots.) Demolition days.



2005-02-04. Western Avenue 4500-4600S. Industrial conversion to retail. Shoppers Paradise (Shoppers Paradise etc. to Home Depot and empty lots.) Demolition days.



2005-02-04. Western Avenue 4500-4600S. Industrial conversion to retail. Shoppers Paradise (Shoppers Paradise etc. to Home Depot and empty lots.) Demolition days.



2005-01-26. Kedzie Avenue 4800S. Industrial conversion to (?). Rudd Container etc. Demolition days.



2005-01-26. Kedzie Avenue 4800S. Industrial conversion to (?). Rudd Container etc. Demolition days.



2005-01-26. Kedzie Avenue 4800S. Industrial conversion to (?). Rudd Container etc. Demolition days.



2005-06-10. Halsted S 4800S. Industrial park. Abandoned.



2005-06-10. Halsted 4834S. Industrial park. Ion Exchange Products. Abandoned.



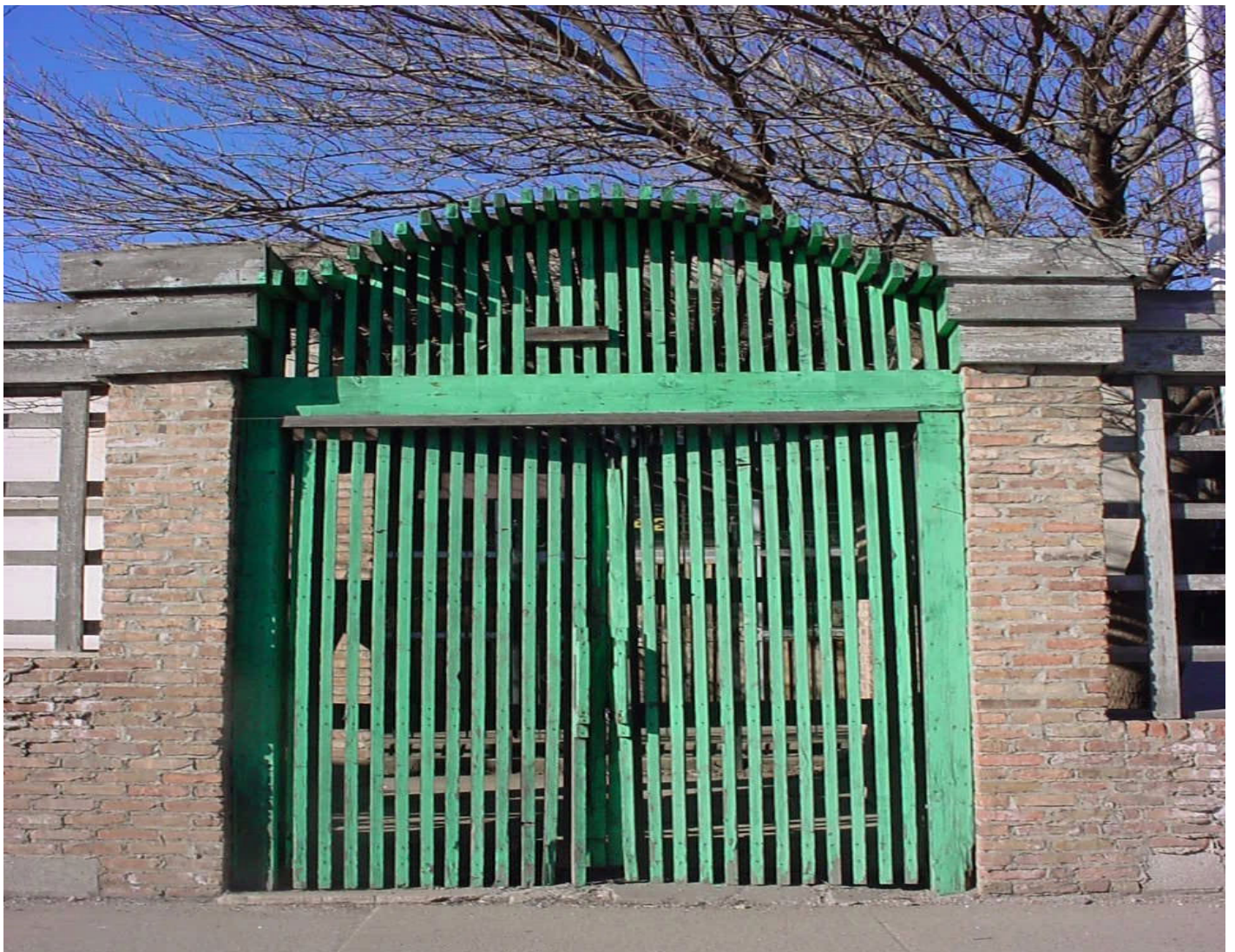
2005-06-10. Halsted St 4800S. Industrial park.. Abandoned.



2005-06-10. Halsted St 4800S. Industrial park. Abandoned.



2005-06-10. Kostner Street 1238N. S & O Elevating & Conveying Systems. Abandoned.



2005-03-04. Chicago Avenue 4700W Industrial. Abandoned 2006..



2005-03-15. Carroll 3021W. Abandoned.



2005-03-03. Laramie Street 1900N. General Mills silo. Abandoned.



2005-03-03. Laramie Street 1900N. General Mills silo. Abandoned.

GENERAL MILLS

NO ADMITTANCE

**EXCEPT FOR ASSIGNED EMPLOYEES
AND PERSONNEL OF CARRIERS
WHO ARE ENGAGED IN AUTHORIZED
DELIVERIES OR PICK-UP**

**VISITORS SECURE PASS
AT THE PLANT OFFICE**

2005-03-03. Laramie Street 1900N. General Mills silo. Abandoned.



2005-02-23. Torrence Avenue 10300S. Giant industrial complex. (Chicago Steel etc.) Most buildings abandoned. Partial use of other buildings. Chicago Steel works a newer plant on 51st street.



2005-03-23. Torrence Avenue 10300S. Giant industrial complex. (Chicago Steel etc.) Most buildings abandoned. Partial use of other buildings. Chicago Steel works a newer plant on 51st street.



2005-02-23. Torrence Avenue 10300S. Giant industrial complex. (Chicago Steel etc.) Most buildings abandoned. Partial use of other buildings. Chicago Steel works a newer plant on 51st street.



2005-02-23. Torrence Avenue 10300S. Giant industrial complex. (Chicago Steel etc.) Most buildings abandoned. Partial use of other buildings. Chicago Steel works a newer plant on 51st street.



2005-02-23. Torrence Avenue 10300S. Giant industrial complex. (Chicago Steel etc.) Most buildings abandoned. Partial use of other buildings. Chicago Steel works a newer plant on 51st street.



2005-06-10. Ogden Avenue 4500W. Industrial site. Abandoned.